

Cloud Application Monitoring Signal Tower

Connects directly to Azure cloud services without external devices or gateways

Microsoft
Azure

Certified



Effortless Device Setup

- The digital inputs on the NH-3FV2 allows users to link devices not compatible with the cloud.
- The Azure Device Template allows users to easily configure user-specific parameters and other properties of the NH-3FV2.

Reliable and Accessible

- The Azure IoT Central is a highly secure platform that enables remote device management and data collection.



φ40

φ60

88dB
(at 1m)

MP3

Network Monitor Signal Tower Series with MP3 Voice Alerts

NH-FV Smart Signal Towers

- Audible alarm and MP3 voice alert functions
- Built-in digital output and contact inputs
- Able to send email alerts
- Monitor network device status using SNMP protocol

LR4 and LR6 Series LED Units

| Size | Color | Model |
|------|-------|---|
| φ40 | | LR4-E-RZ / YZ / GZ / BZ Clear globe |
| φ60 | | LR6-E-RZ / YZ / GZ / BZ Clear globe |

Easily Reconfigure LED Colors

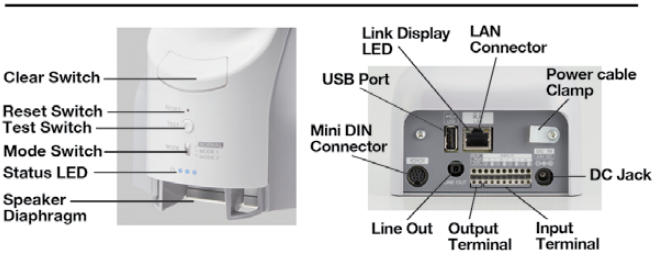
No tools are required to reconfigure the LED units. Simply twist the LED units to lock or release the units from one another. Standard stack lights are generally glued together or require tools to reconfigure modules.

Monitor network device status using SNMP protocol

In addition to PING monitoring, the NH Signal Towers are equipped with an SNMP monitoring function. It actively obtains MIB information from supported SNMP network devices and is able to notify personnel with visual, audible, and/or email notifications when changes occur.



Control Interface (NH-FV2 Series)



Options

NH-WST2
Wall-mount Bracket

ADP-001
Universal AC Adaptor

NHL-TF (For NHL-FV2/FB2)
NHP-TF (For NHP-FV2/FB2)
Dimmer Film

| Length / NHP-FV2 Main Unit mass Main Unit Length | | | | | | Length / NHL-FV2 Main Unit mass Main Unit Length | | | | | |
|---|-----|-----|------|------|------|---|------|------|------|------|------|
| Number of Tiers | 1 | 2 | 3 | 4 | 5 | Number of Tiers | 1 | 2 | 3 | 4 | 5 |
| Main unit length (mm) | 256 | 296 | 336 | 376 | 416 | Main unit length (mm) | 256 | 296 | 336 | 376 | 416 |
| Mass (g) | 945 | 980 | 1015 | 1050 | 1085 | Mass (g) | 1030 | 1090 | 1150 | 1210 | 1270 |

OFF

NHP-3FV2-RYG



NHL-3FV2-RYG



Easily Reconfigure LED Colors

How to Order

NHL-3FV2N-RYG

① ② ③ ④

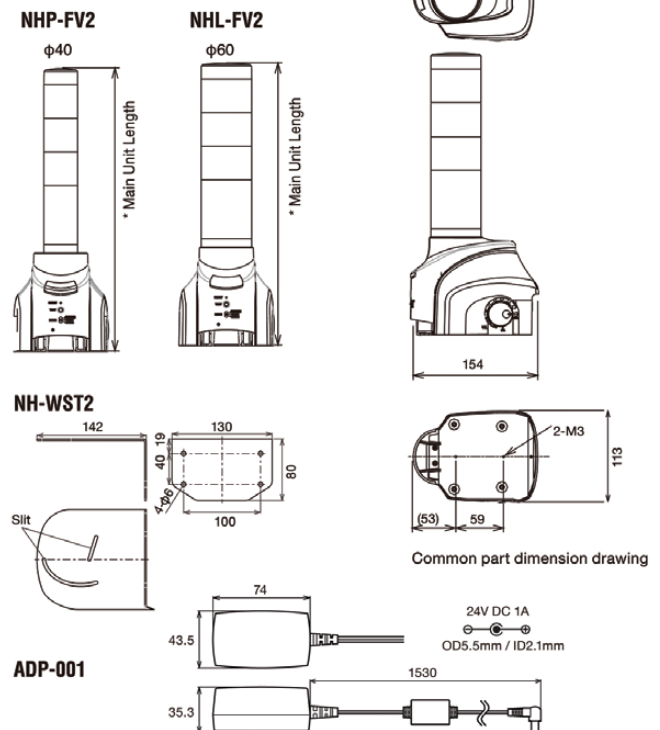
① Size
P = φ40
L = φ60

③ AC Adaptor
Blank = AC Adaptor included UL
W = AC Adaptor included
Replacement plug included
 UL CCC VDE KC UK
N = AC Adaptor not included

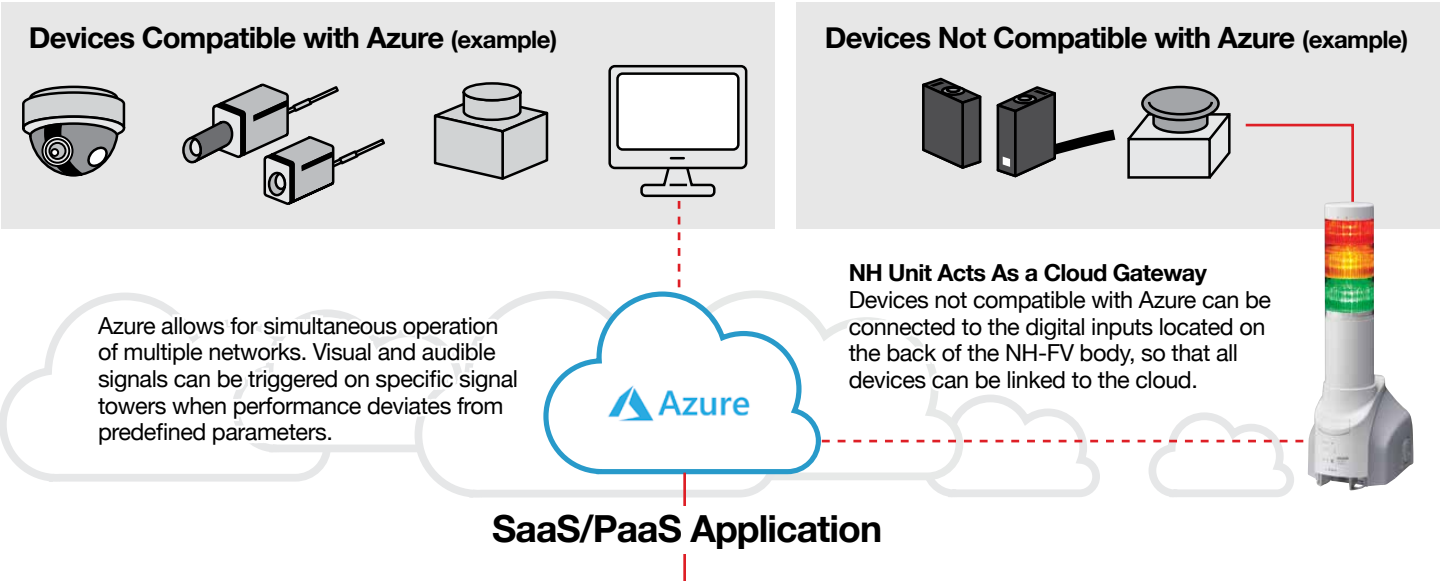
④ LED Unit Colors

1 = 1 tier: R / Y / G
2 = 2 tiers: RY / RG
3 = 3 tiers: RYG
4 = 4 tiers: RYGB
5 = 5 tiers: RYGBG

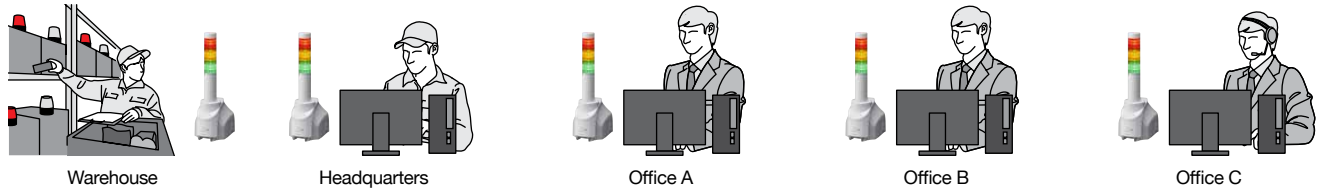
Dimensions (Unit: mm)



Seamless Azure Integration

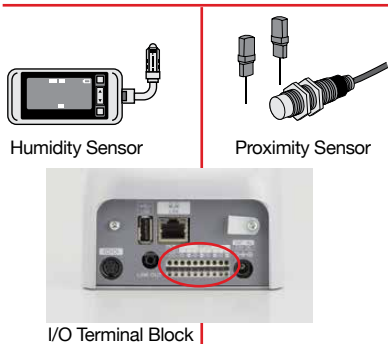


Microsoft Azure Certified for IoT Signalling Devices



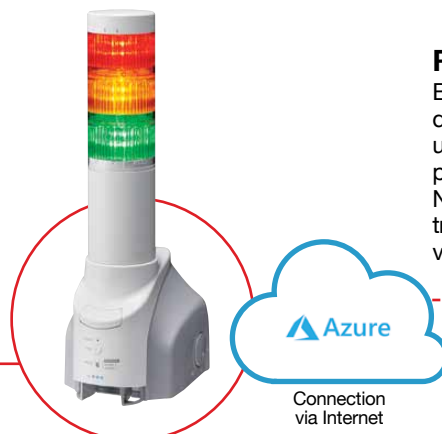
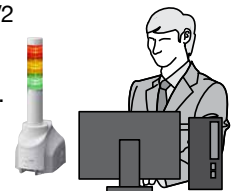
Access All Your NH-FV Data In Azure

Digital Output with Digital I/O



Remote Monitoring

By connecting sensors and NH-3FV2 devices to the Azure cloud network, users are able to monitor their processes remotely and in real-time. NH-3FV2 devices can also be triggered remotely to provide a visual and audible response.

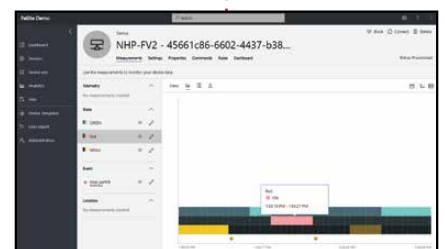


Confirm by Clearing NH-FV Alerts



Store and Analyze Data

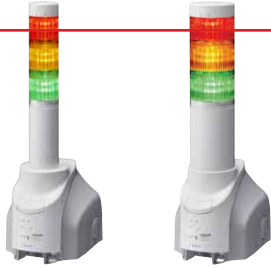
The Azure IoT Central tracks the time, type, and duration of NH-3FV2 alerts. This data can be exported to other software for further analysis.



*Microsoft Azure is a registered trademark of Microsoft Corporation in the United States and other countries.

Monitoring Functions for NH-FV Series

Compatible with various monitoring functions



Laptop, PC,
Other devices



Printers



Routers



Machinery
Assembly Lines



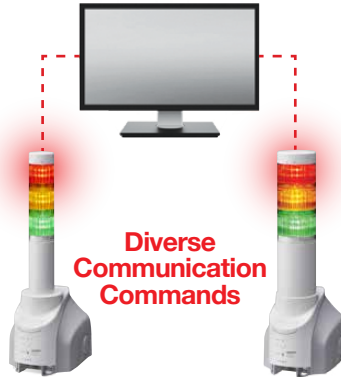
Data Storage
Devices

PING Monitoring

Ping up to 24 nodes simultaneously. While Ping is a basic diagnostic tool, the NH Signal Towers is able to notify you based on your priorities. For example, low priority ping response failures may trigger a flashing light, while higher priority failures will trigger an MP3 voice alert and send an email report, in addition to the flashing light.

Application Monitoring

Gain control over your applications and earlier problem detection. Evaluate the performance of standard software and web applications and if an error occurs, the NH Signal Towers promptly alerts you before problems become worse.



Trap Monitoring

As one of the oldest standards for network equipment fault notification, most network devices support SNMP traps. The NH Signal Towers are able to send, receive and analyze trap information and responds and/or notifies you appropriately.

Email Transmission

Send email reports of various network events to up to 8 addresses. The subject and body can be customized and can be automated to be sent in a variety of situations.

HTTP Command

HTTP (Hypertext Transfer Protocol) is an application-layer protocol designed within the framework of the Internet protocol suite.

The NH Series accepts HTTP commands sent through a web browser or PLC to trigger NH Series visual and audible alert functions.

NH-FV Series

Command execution
(Red / Amber / Green Lights on Alarm sounds)

<http://192.168.10.1/api/control?alert=111001>

Command Execution
(Perform clear operation)

<http://192.168.10.1/api/control?clear=1>

RSH Command

Remote Shell (RSH), command line program that executes shell commands on remote hosts such as the NH Series.

RSH can be used to automatically run commands based on event information from network management software and various monitoring tools on the NH Series to trigger visual and audible alert functions.

NH-FV Series

Command execution
(Red / Amber / Green Lights on Alarm sounds)

`rsh 192.168.10.1 -l root alert 111001`

Command Execution
(Play the CH10 message)

`rsh 192.168.10.1 -l patlite sound 10`

SOCKET Communication

Socket(s) allows communication between PCs and is used in a client-server application framework.

The NH Series accepts an application-level protocol called PNS (developed by PATLITE) to establish connection between client and server and to control visual and audible alert functions.

NH-FV Series

Command execution
(Red / Amber / Green Lights on Alarm sounds)

`58H,58H,53H,00H,00H,06H,01H,01H,01H,00H,00H,01H`
(NH-FV Series cannot play alarm sounds with PHN command)

Command Execution
(Play the CH10 message)

`58H,58H,56H,00H,00H,04H,01H,00H,00H,10H`

CAUTION

To ensure correct use of these products, read the "Instruction Manual" prior to use. Failure to follow all safeguards can result in fire, electric shock, or other accidents. Specifications are subject to change without notice.

PATLITE®

PATLITE (U.S.A.) Corporation

20130 S. Western Avenue, Torrance, CA 90501

Tel: 310-328-3222 FAX: 310-328-2676 E-mail: 888-214-2580

www.patlite.com

● PATLITE, the PATLITE logo are either registered trademarks or trademarks of PATLITE Corporation in JAPAN and/or other countries.

PLUS-2003A